

Smart Ship Viewer (SSV) Fleet Viewer screen

Equipment status and alerts

Efficient, safe, and secure operation management

This service enables checking at any time the status of managed ships from the management company office by installing our equipment in ships with high-speed satellite communication equipment such as FX*1 installed. The service thereby contributes to economical, safe, and secure navigation management.

System configuration

Ship

Configuration : JRC's VDR/S-VDR JCY-1900/1950

Radar, ECDIS, GPS, AIS, Gyro, Others → VDR/S-VDR JCY-1900/1950 + Inmarsat FX*1

Configuration : J-Marine NeCST

GPS, AIS, Gyro, Others → VDR/S-VDR JCY-1900/1950 or JCY-1800/1850 + J-Marine NeCST + Inmarsat FX*1

Configuration : VDR/S-VDR other than JCY-1900/1950

GPS, AIS, Gyro, Others → VDR/S-VDR JCY-1800/1850 + J-Marine BOX NDC-7010 + Inmarsat FX*1

※To connect VDR/S-VDR excepting JRC, please contact us.

Configuration : Not installed VDR/S-VDR

GPS, AIS, Gyro, Others → J-Marine BOX NDC-7010 + Inmarsat FX*1

※To connect each sensor

Shore

Fleet Viewer

List of services

| | |
|------------------------|--------------------------|
| Ship monitoring | VDR data download |
| Navigation data | Sensor |
| Planned route & track | Radar / ECDIS image |
| Weather | Microphone/VHF audio |
| Alarm | |
| Data Sharing | |

The services available depend on the configuration of the ship.

J-Marine BOX NDC-7010 NEW

This box is to get and send data from connecting navigation sensors to J-Marine Cloud for the ships installing VDRs excepting JCY-1900/1950.

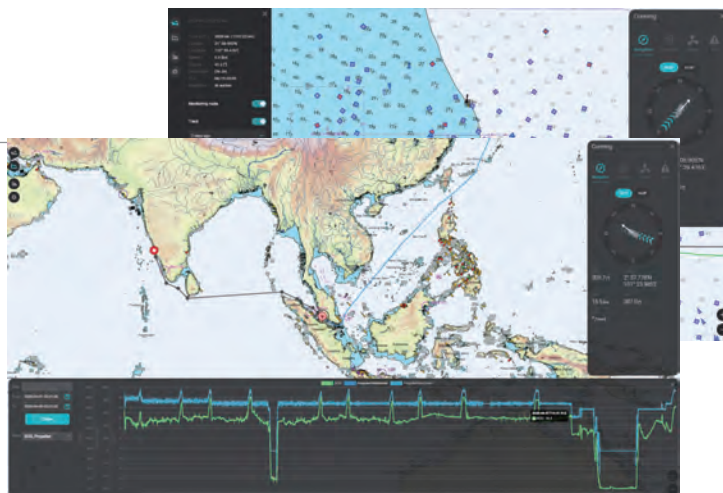
* 1: This service requires broadband communication such as Inmarsat FX (VSAT).

Ship Monitoring Service

V or **N** or **B**

This ship monitoring service*1 allows you to browse the movements of managed ships and the status of JRC equipment from the management company office. This service also contributes to efficient navigation management and avoidance of unexpected equipment problems. To use this service, a combination of JRC's VDR and J-Marine NeCST is fundamentally recommended as the configuration.

*1: The information that can be monitored varies according to the configuration of the equipment that are installed. However, the service is partially available with JRC equipment only.



VDR Data Download Service

V

This service*2 allows you to obtain data that is stored in JRC's VDR/S-VDR (ship speed, steering, engine information, etc.), which is installed in the ship, from the land via J-Marine Cloud. The data that is obtained can be reproduced by using the VDR Real Time Monitor software*3. This service contributes to confirmation of navigation status of the ships and checking of the condition of any accident quickly without the need for any intervention of the crew upon occurrence of the accident. To use this service, JRC's VDR is required.

*2: To use this service, JCY-1900 or S-VDR JCY-1950 is required.

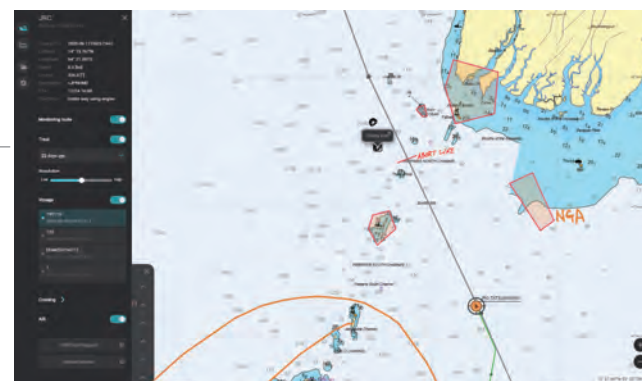
*3: Dedicated software of JRC, attached to VDR/S-VDR as the standard, Please contact us.



Data Sharing Service

N

By storing navigational plan that are created by using J-Marine NeCST in J-Marine Cloud, this service enables sharing of the information with J-Marine NeCST of other ships. The service allows the workload reduction for situations such as creating a navigational plan along the same route. To use this service, J-Marine NeCST is required.



- This screen and content may be subject to change
- Service contract is required in advance to start this service

For further information, contact:



Since 1915

Japan Radio Co., Ltd.

URL <https://www.jrc.co.jp/eng/>

Tatsumi Office: 7-32, Tatsumi 1-chome, Koto-ku, Tokyo
135-0053, Japan
Telephone: +81-3-5534-1207
Facsimile : +81-3-5534-1199

Overseas Branches : Athens, Manila
Liaison Offices : Taipei, Hanoi, New York
Overseas Subsidiaries : Busan, Shanghai, Singapore
Jakarta, Rotterdam, Egersund
Houston, Rio de Janeiro