

JFC-600

Fish finder FF60

JRC



– a new colour LCD fish finder from JRC clearly distinguishes the type of fish, realising a profitable catch

6.5" high visibility LCD screen

Dual frequency 50 & 200kHz

600W RMS transmitting power

Automatic mode selection

Multiple display modes & alarms available

JRC

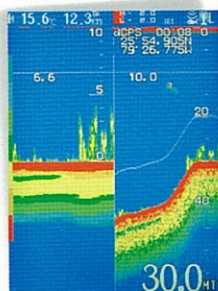
Japan Radio Co., Ltd.

JFC-600 Fish finder

– performance features

Unique features

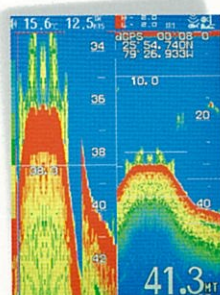
- The JFC-600 fish finder continues the tradition of high performance, operating in dual frequency as standard, resulting in a highly accurate and reliable read-out.



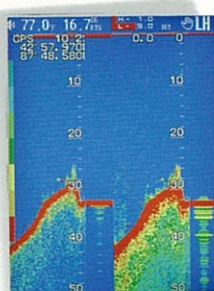
- Single frequency with bottom discrimination mode

Display modes

JRC's new fish finder incorporates a 6.5" high definition colour LCD display. The innovative display modes (eleven available) allow you to select and view effortlessly the information you require. The operating status indicates gain, noise suppression and interference. The numerical data, such as speed, position, depth and temperature are conveniently displayed and reappear in each display mode.



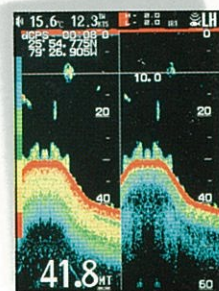
- Single frequency with auto zoom mode



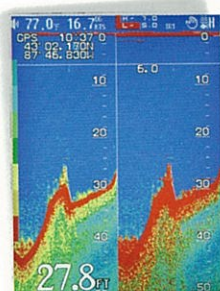
- Dual frequency with A-scope mode



- Navigation mode - graphic display



- Dual frequency mode (night mode)



- Dual frequency mixed mode

Dual frequency mixed mode

The JFC-600 includes a "dual frequency mixed mode", enabling you to overlay 2 different frequencies, a unique feature normally only available on high-end fish finders. Generally the lower frequency is more suitable for bottom discrimination, while the high frequency is more useful for shallow water detection.

The unique "mix mode" of the JFC-600 enables you to see the differences of the two frequencies more clearly, giving you better potential for a more profitable catch.

Alarms

The JFC-600 incorporates three fish finding alarms, a 'fish, shallow and deep' alarm. In addition, the fish finder integrates three water temperature and four navigation data alarms, and a function to turn the alarm buzzer on or off. These alarms will contribute to safer navigation and more efficient fish finding.

JFC-600 Fish finder

– system flexibility

Flexible interfacing

The JFC-600 also known as the FF60 integrates a highly reliable interfacing field. The transducer is the heart of the operation, receiving speed, depth and temperature information, sending ultrasonic signals which determine seabed conditions and the presence of life underwater.

You also have the opportunity to connect a (D)GPS sensor and the JFC-600 has as well an NMEA 0183 input and output, enabling you to display navigation information.

Easy operation

The compact design of JRC's fish finder incorporates a new style of Man-Machine-Interface, providing enhanced ergonomics and user-friendliness. The large LCD screen accompanied by JRC's customary menu structure ensures logical, accurate and convenient operation.

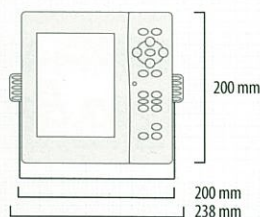


Automatic mode selection

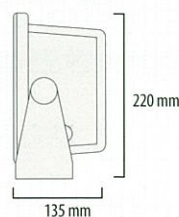
If situations arise where automatic scaling is essential, the JFC-600 easily adapts to the mode selection, providing an optimised view. As you navigate to your next catch and you need a certain waypoint (up to 400 possible), depth or area, the automatic mode selection will simply adapt to the mode and displays what is required at that point.

Dimension drawings - Display

JFC-600
Weight 3,5 kg



cutout for panel mount
height 176 mm, width 192 mm, depth 220 mm



JFC-600 Fish finder

– specifications

What's standard in the box?

1. Fish finder
2. Spare parts
3. Power cable (length 1.5 m)
4. Sun cover
5. Manual (English)

Model		JFC-600
Display		
Model		JFC-600
Display		6.5" colour LCD - 640x480dot
Presentation		8 colour gradation with 4 patterns
Brightness control		10 levels
Range		auto or manual: 5 to 1500m, 10 to 5000ft, 3 to 600fm
Shift		auto or manual: 0 to 1000m, 0 to 3000ft, 0 to 600fm
Frequency		200kHz/50kHz (dual frequency)
Power output		600W RMS (4800W P-P)
Gain (sensitivity)		100 steps
Depth unit		meter, feet, fathom, SP (0.3000 to 1.9999m)
Speed unit		knots, mile/h, km/h
Noise suppression		level 0 to 7
Interference rejection		off, IR1, IR2
STC		short, mid, long
Water temperature		0° to 40°C (32.0° to 100.0°F)
Speed		0 to 70 knots
Trip log		0 to 999NM (only at STD/navigation type 1 or 2)
NMEA input		APA, APB, BWC, BWR, GGA, HDG, HDT, MTW, RMC, VTG, VHW
NMEA output		SDDBT, SDDPT, SDMTW, SDAPB, SDBWC, GPGGA, GPRMC
Alarm fishing		fish, shallow, deep
Alarm temperature		upper, lower, rate
Alarm navigation		arrival, anchor, off course, DGPS
Waypoints		up to 400 (10 plans, 40 waypoint per route)
Input voltage		DC 12-24V
Power consumption		25W (approx)
Water resistance		IPX5
Ambient conditions		-15°C to +55°C
Optional items		
Triducer 200/50kHz dual freq - transom		CFT-2501TFA
Triducer 200/50kHz dual freq - thru hull		CFT-2501HFB
Transducer 200/50kHz dual freq - thru hull		CFT-2501HCA
Control connector (GPS/NMEA)		3-282-8SG-3DC (CONXALL)
12 channel GPS receiver (with SBAS)		JLR-4340
Power cable (extra/spare)		CFQ-5484

All specifications are subject to change without notification.

For further information, contact:



Japan Radio Co., Ltd.

URL <http://www.jrc.co.jp/eng/>

Main Office: Nittochi Nishi-Shinjuku bldg.
10-1, Nishi-Shinjuku 6-chome
Shinjuku-ku, Tokyo 160-8328, Japan
Telephone: +81-3-3348-4099
Facsimile: +81-3-3348-4139

Overseas Branches : Seattle, Amsterdam, Athens
Liaison Offices : Taipei, Manila, Jakarta, Singapore,
Hanoi, Shanghai, Hamburg, New York