

Color Plotter

JLZ-1000



※LCD monitor option

Rapid chart rendering and display capabilities for the latest NAVIONICS®+ charts

- Split-screen functionality lets you view multiple kinds of information simultaneously
- Update support maintains use of the latest charts*
- TT (ARPA) and AIS operation-assistive display capabilities installed
- New control additions for simple easy to use
- The user's ship's tracks and marks can be imported from other JRC devices

*At customer discretion



Japan Radio Co., Ltd.

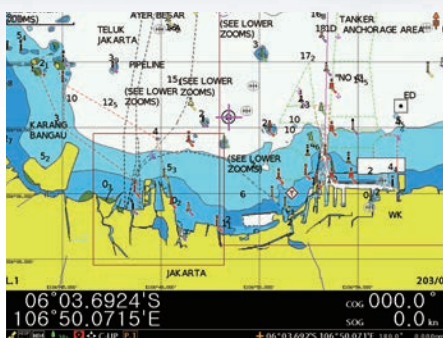
Rapid chart rendering and display capabilities for the latest NAVIONICS®+ charts



※LCD monitor option

Support for latest NAVIONICS®+ charts

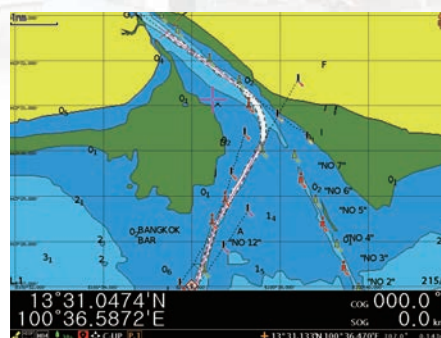
The newest NAVIONICS®+ allow for incredibly detailed display of sea areas. The JLZ-1000 color plotter also has a high-speed display for stress-free navigation and chart updates to let you operate using the latest data.



《Jakarta port》

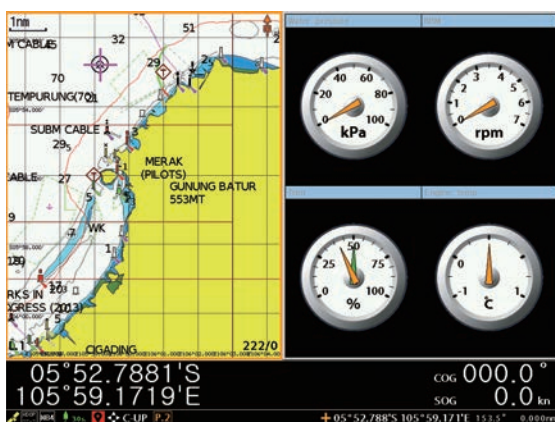


《Singapore port》

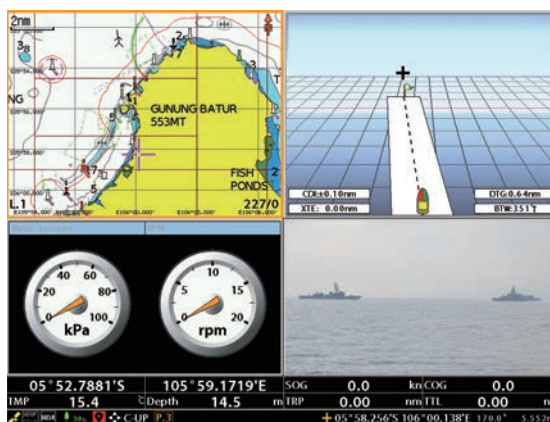


《Bangkok port》

Split-screen functionality to view various information simultaneously






《Half-screen display》



《Quarter-screen display》

Split-screen options

-  Halves
-  Thirds
-  Quarters

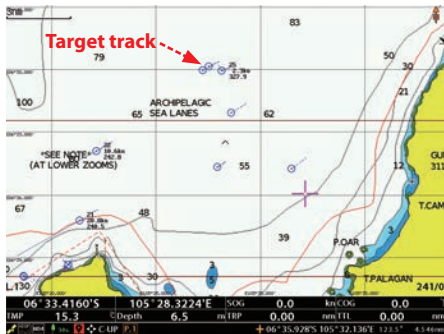
Display up to four kinds of various information including charts, highways, analog meters*1, and monitoring displays*2 in split-screen simultaneously.

*1 : Connect the CAN unit to display engine and fuel information.

*2 : By connecting an external camera, a monitoring video feed can be displayed.

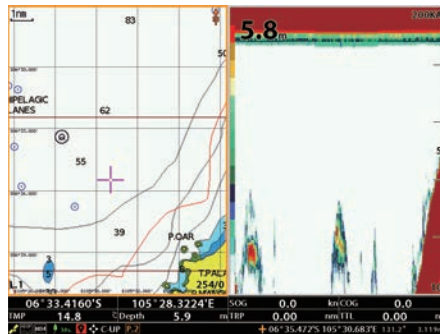
Full suite of features

Operation-assistive display features



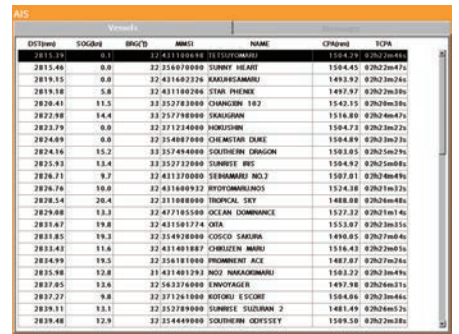
《TT (ARPA) display》

The radar's TT functionality displays the trails of other ships.



《Sounding display》

Displays the sounding function on connecting the transducer.



《AIS display》

Connect an AIS receiver to display AIS information.

New key layout for comfortable navigation

The JLZ-1000 allows you to carry out all operation simply by using the keyboard even in turbulent waters.

《Preset keys》

Assign different functions to each button. Up to ten presets can be set in total.

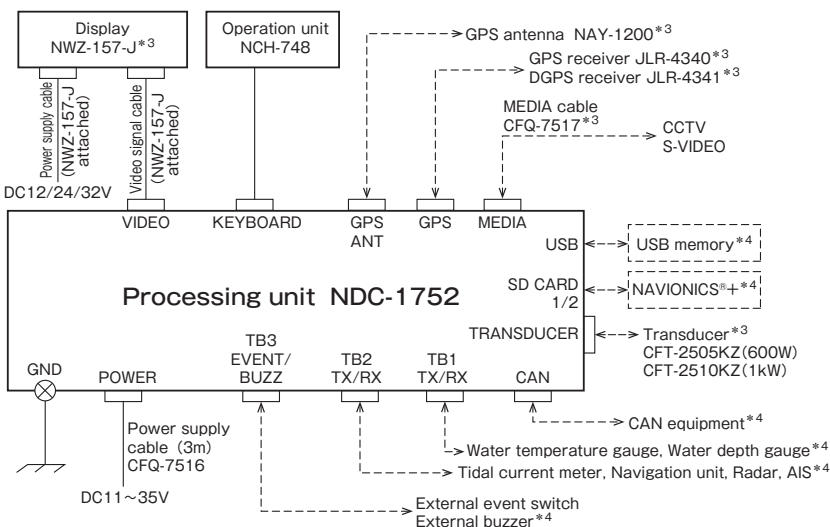


- Set event mark
- Set cursor mark
- TT track display
- Screen display (charts, depth information, data readouts, highways, destinations, routes, GPS, AIS DSB, and NAVTEX information)
- Chart display settings
- Information readouts (TT, GPS buoys, AIS, DSB)
- Tracking information (water depth, temperature, currents, date, and time)

Preset key example



Diagram



* 3: The following equipment is optional.

- Display NWZ-157-J
- GPS antenna NAY-1200
- GPS receiver JLR-4340
- DGPS receiver JLR-4341
- MEDIA cable CFQ-7517
- Transducer CFT-2505KZ/CFT-2510KZ

* 4: The following equipment is customer discretion.

- NAVIONICS[®]+
- CAN equipment
- USB memory
- Water temperature gauge
- Water depth gauge
- Tidal current meter
- Navigation unit
- Radar
- AIS
- External event switch
- External buzzer
- External camera

Data conversion software is available. It helps you transfer your important content stored in a JRC's previous model to JLZ-1000. For more information, please contact us.

Specifications

Name		Color plotter	
Model		JLZ-1000	
Functional performance			
Display		Resolution: XGA or SVGA / Instration: side	
Valid display range		Latitude 85 degrees or less	
Chart data		Overseas: NAVIONICS®+ / Japan: new pec	
Display scale		0.1 ~ 5000nm (Screen width)	
Display operation mode		North Up, East Up, West Up, South Up, Course Up, Head Up and Destination Up	
Position data display		Latitude / longitude, LORAN C, LORAN A and Decca	
Main screen display	Split (1/2/3/4 split)	Map screen (new pec: 2-screen display possible / NAVIONICS®+ : 1 screen only), highway, various types of data, sounding and video	
	Non-split	GPS reception, AIS information, DSB information, NAVTEX information	
Track	Saved information		
	Save interval	Time	1, 2, 5, 10, 20, 30, 60, 120, 300, 600, 1200, 1800, 3600 seconds
		Distance	0.01, 0.02, 0.05, 0.1, 0.2, 0.5, 1, 2, 5, 10nm
	No. of points saved		500,000 points (Display: 50,000 points)
	Display color		7 colors (normal, depth, and temperature: switchable)
	Other ship's track	TT	100 targets (with saving main unit)
AIS		300 targets (without saving main unit)	
Mark (Destination)	Type		36 types
	No. of points saved		50,000 points
	Display color		7 colors
	Comment input		14 characters
Route	No. of points saved		100 routes (1 route 100 waypoints)
	Comment input		14 characters
Line	No. of points saved		Solid line 50,000 points, Fill 50,000 points
	Display color		7 colors
Others			External event input, external buzzer output (log pulse), GPS buoy data input and DGPS224/GPS124 receiver direct connection
Input power supply voltage		DC11~35V	
Power consumption		Less than 25W	
Serial communication (input output)			
No. of input/output systems		NMEA0183, JRC: 2 output systems, 2 input systems CAN: 1 system	
Format		NMEA0183, JRC/CAN	
NMEA0183 version		Ver1.5/2.1/2.3/4.0	
NMEA0183 output sentence		APA, APB, BWR, DBT, DPT, GGA, GLL, GSA, GSV, HDT, MTW, RMB, RMC, VHW, VTG, XTE, ZDA	
NMEA0183 input sentence		CUR, DBK, DBS, DBT, DPT, GGA, GLL, GNS, GSV, HDG, HDT, MDA, MTA, MTW, MWD, MWV, RMC, RPM, TLL, TTM, VHW, VTG, VWT, ZDA	
CAN output sentence		128259, 128267, 129026, 129029, 129283, 129284, 129285, 130310	
CAN input sentence		128259, 128267, 129026, 129029, 130310	
Environment conditions			
Operating temperature range		Processing unit: -10°C to +50°C, Operation unit: -15°C to +55°C	
Storage temperature range		-25°C to +70°C	
Waterproof		Processing unit: IP22 (floor-mount) / IP20 (wall-mount), Operation unit: IP22	

- new pec is the name of the new personal electronic chart that is made available the Japan Hydrographic Association.
- NAVIONICS®+ is a registered trademark of Navionics.
- NAVIONICS®+ is the electronic chart data that is made available by Navionics.
- For the information regarding the NAVIONICS®+ electronic chart, please contact JRC.

• Specifications may be subject to change without notice.

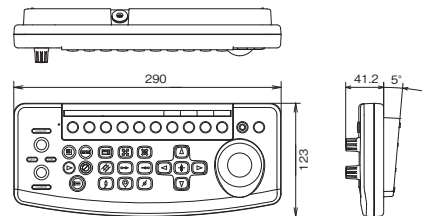
Configurations

Item name	Mode	Q'ty
Standard configuration		
Processing unit	NDC-1752	1
Power supply cable	CFQ-7516	1
Spare fuse	51NR205000	1
	51NR207000	1
Operation unit	NCH-748	1
Velcro tape	MTZ302573	2
Flush-mount kit	MPTG31340	1
Instruction manual	7ZPNA4661	1
Simple operation guide	7ZPNA4663	1
Options		
GPS receiver	JLR-4340	
DGPS receiver	JLR-4341	
GPS connection cable	CFQ-9000	
Map card	CDD-812	
Operation unit mounting metal fitting kit	MPXP32938	
MEDIA cable	CFQ-7517	
GPS antenna	NAY-1200	
LCD monitor (15 inch)	NWZ-157-J	
LCD monitor (10 inch)	NWZ-211	
Transducer (600W)	CFT-2505KZ	
Transducer (1kW)	CFT-2510KZ	

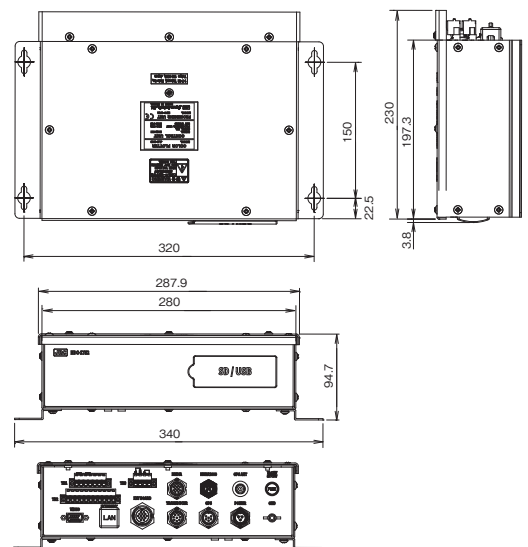
Dimensions

Operation unit NCH-748 Weight : About :1.1kg

unit : mm



Processing unit NDC-1752 Weight : About :2.2kg



For further information, contact:



Since 1915

Japan Radio Co., Ltd.

URL <https://www.jrc.co.jp/eng/>

Tatsumi Office: 7-32, Tatsumi 1-chome, Koto-ku, Tokyo 135-0053, Japan

Telephone: +81-3-5534-1207

Facsimile : +81-3-5534-1199

Overseas Branches : Athens, Manila

Liaison Offices : Taipei, Hanoi, New York

Overseas Subsidiaries : Busan, Shanghai, Singapore

Jakarta, Rotterdam, Egersund

Houston, Rio de Janeiro