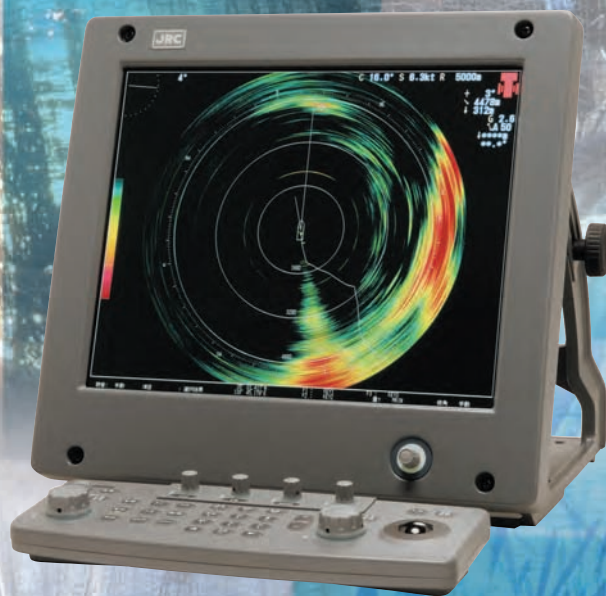




OMNI COLOR SCANNING SONAR *JFS-6880* SERIES



Japan Radio Co., Ltd.

A Target Fish School Clear At a Glance!!

Ship's Heading Mark (SHM) **Cursor position** **Transducer unit operating state** **Information Area**

Information Area Data:
 SPEED: 0.2kt
 COURSE: 117.6°
 TEMP: 18.1°C
 DEPTH: 368m
 2005-10-21 01:50:00
 34° 58.420' N
 138° 45.975' E
 TEMP: 18.1°C
 DEPTH: 368m
 GYRO: 312°
 RANGE: 246m
 FISH: 42

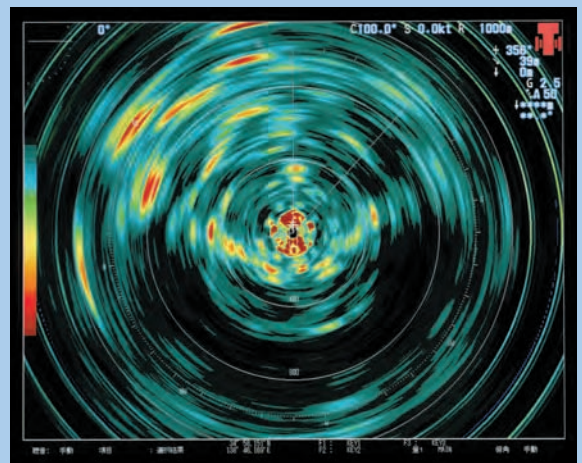
Callout Boxes:
 - **Fish quantity histogram:** The fish echo intensity level distribution is enclosed by the fish quantity mark is displayed. The highest intensity echo level is seen at a glance, and the fish school density can be monitored quantitatively.
 - **Tidal current information:** Up to 3 layers of tidal current can be displayed as vectors obtained from a tidal current meter. * It is required to connect a tidal current meter.
 - **Own ship's information:** Own ship's position, course and speed as well as water temperature and depth are indicated. * It is required to connect a GPS receiver.
 - **Water temperature/depth graphs:** The changes of water temperature and depth for the past 2 hours are displayed in graphs. * It is required to connect a water temperature sensor.

Other Labels:
 - Audible tone azimuth
 - Fish quantity mark
 - Fish school mark
 - Fish school position
 - Tilt-scan angle
 - Cursor

A Variety of Display Modes

A variety of display modes including "full-screen mode" and "off-centering mode" are available. The numerical data indications are minimized and the sonar echo images are maximized in order to monitor fish echoes accurately.

In addition, the special image displays such as "Cross-section image" or "fish finder echo image" combined displays are also available to ensure a target fish echo position and density to be easily determined.



Power/Dimmer Control

These switches are used to change over the power ON/OFF and the lighting levels.

Press the **POWER** switch once to power on.
Press the **POWER** and **PANEL** switches simultaneously for one second or more to power off.
The panel lighting level can be adjusted in 5 steps whenever the **PANEL** switch is pressed.

Image Dial

The 100% performance of the sonar can be demonstrated by setting the transceiver and the signal processor to appropriate parameters to meet the fishing operating conditions such as fish types, fishing area and sea state. 5 sets of setting parameters that are stored in the internal memory can be set by press this control dial and the parameters such as TVG, clutter and beam width can be finely adjusted by turning the dial.

Multi-Control Dial

This dial can be used for setting any of the menu items that are indicated in the menu display.
Arbitrary functions can also be assigned to the dial control modes like the user function keys.

Volume Dial

This dial can be used to control the audible tone volume.
The alarm buzzer tone is changed over in 5 volume levels by press the control dial.

Gain Dial

Gain can be controlled by this dial.



Mark Input/Memory Screen

The mark keys are used to input marks for point of casting net, buoy and fish school.
The current display can be stored in the internal memory by press the **MEMORY** key.

User Keys

The function keys **F1** ~ **F3** are assigned to arbitrary functions specified by a user.

Cursor Control

The dial can control the cursor move and the menu setting.
The information display area can be displayed or cleared by the **CNCL/INFO** key.

Transducer Operation

The transducer can be fall from the hull bottom by press the **FALL** key, and shedded in the hull bottom inside by press the **SHED** key.

Azimuth Control

The audible tone azimuth can be changed by controlling this dial.

Tilt-scan Angle Control

The tilt-scan angle of the transducer can be controlled by turning the dial.
The tilt-scan angle control mode can alternately switch Automatic and Manual by pressing the **TILT AUTO** key.

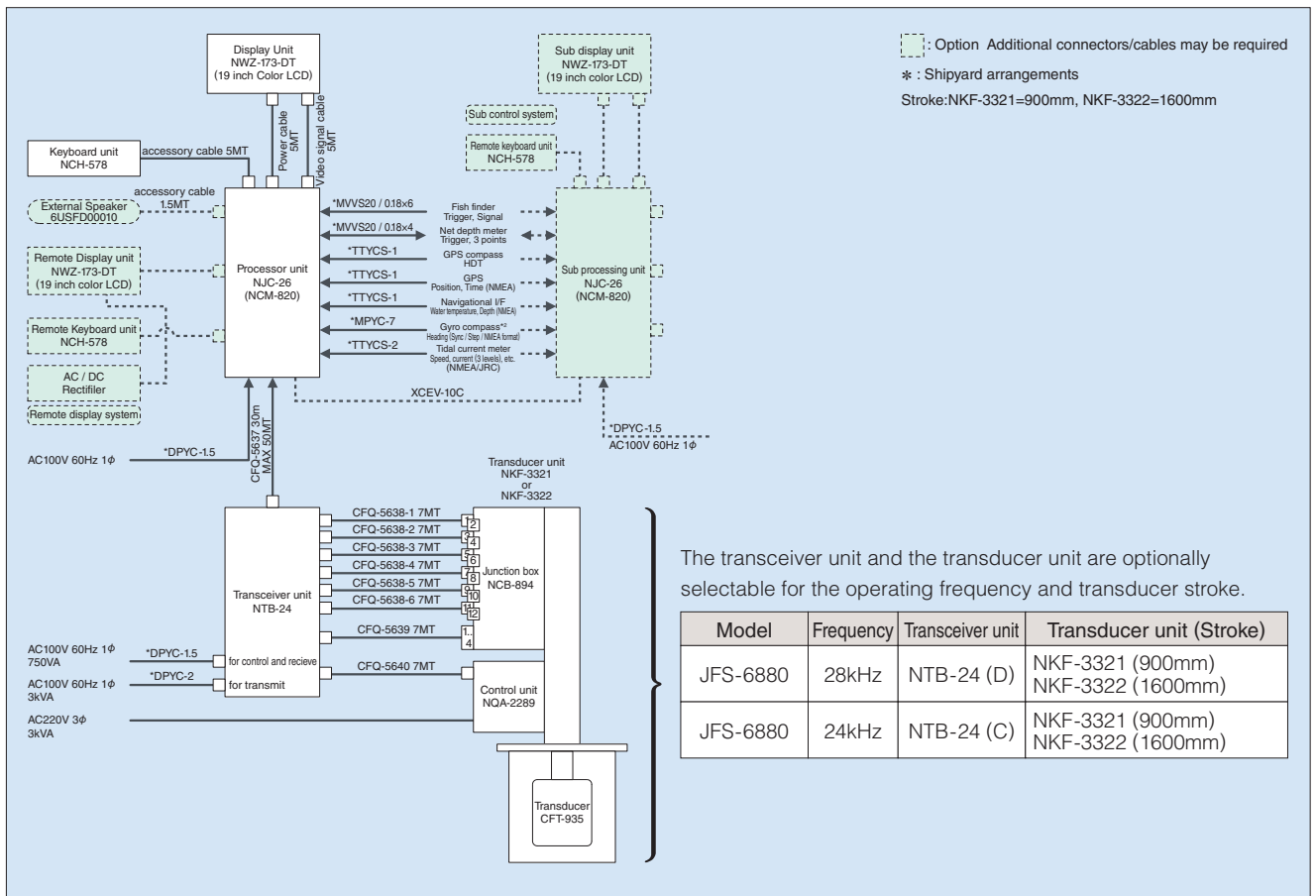
● COMPOSITION

Component		JFS-6880 (28kHz) standard	JFS-6880 (24kHz)
Display Unit		NWZ-173-DT	
Processor Unit		NJC-26	
Keyboard Unit		NCH-578	
Transceiver Unit		NTB-24 (D)	NTB-24 (C)
Transducer Unit		NKF-3321 (900mm) NKF-3322 (1600mm)	NKF-3321 (900mm) NKF-3322 (1600mm)
Spares for Processor		7ZXBS0022	
Spares for Transceiver		6ZXBS00155	
Connection Cable		CFQ-5637 (30M), CFQ-5638-1~CFQ-5638-6 (7M), CFQ-5639 (7M), CFQ-5640 (7M) NORMAL	
Options	Step-down Transformer	NBL-177 (three-phase 440V→220V) NBL-175 (single-phase 220V→100V) CBC3000D 115V (single phase 115V→100V)	
	Audible tone Speaker	6USFD00010 (4Ω 2W)	
	NSK Unit	CMJ-304E	
	Operation Unit Fitting Kit	MPXP33144	

● SPECIFICATIONS

Display type	19-inch color TFT LCD with 1280 x 1024 pixels (SXGA)
Operating frequency	24kHz or 28kHz
Horizontal detection range	360° full-circle electronic scanning
Tilt-scan range	Electronic tilting of -5° to +60°; automatic / manual
Display colors	Echo images in 32 colors (Settable by user)
Sonar range	150 to 3200m (24 / 28kHz)
Transmitted pulse length	5 – 36ms (24 / 28kHz)
Display modes	1) Normal 2) Full-screen 3) Off-center 4) Audible tone image combined 5) Fish finder image combined
Interference rejection	Included
Clutter rejection	Included
Transmitted power reduction	Included
Fish school alarm	Included
Automatic tracking	Included
Numerical indications	Range, Gain, tilt-scan angle, cursor position, ship's position, speed and course, water depth and temperature
Audible tone	Automatic / manual turning; 1kHz, 2W (external speaker output)
External inputs	1) Gyro compass (sync / step / NMEA format) 2) Speed log (Pulse / NMEA format) 3) Tidal current meter (NMEA / JRC format) 4) GPS position data (NMEA format) 5) Fish finder 6) Net depth meter
Power supply	100VAC, single-phase, 50 / 60Hz : 750VA or less (option is not included) 220VAC, single-phase, 50 / 60Hz : 3kVA or less 220VAC, three-phase, 50 / 60Hz : 3kVA or less

● SYSTEM CONFIGURATION



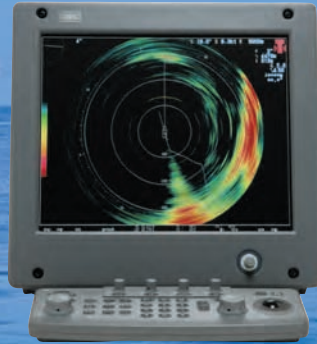
OMNI COLOR SCANNING SONAR

JFS-6880 SERIES

Simple Operation and High Performance for a Superior Fish Catch!!

The JFS-6880 series is a new high performance omni color scanning sonar based on advanced signal processing and an ergonomically designed interface for simple operation. The JFS-6880 series sonar meets a wide range of fish operations for offshore/inshore netting, inshore troll, bonito and mackerel pike fishing vessels

NWZ-173-DT Display Unit



NCH-578 Keyboard Unit



NJC-26 Processor Unit

Easy to See Large Screen with High Resolution

The Display Unit adopts a 19-inch color LCD monitor with a high resolution of 1280 x 1024 pixels (SXGA) which is supported by advanced signal processing technology. The screen provides clear, definitive images with a high resolution, whether in short or long distance.

32-color Display for Easy Understanding of Fish Density

The fish echo image is displayed in 32 colors to ensure that the fish school distribution and density are easy to understanding.

Easy-to-operate Panel Layout and Convenient User Key operation

The keys and control dials are functionally grouped and arranged for intuitive operation. The commonly used functions and menu items are stored in memory and can be assigned by one-touch operation of three user keys and multi-functional control dials.

Fish Echo Dial Control for Quick Setting for Fishing Operations

The fish echo dial can store five sets of various parameters for the transceiver and signal processor. An appropriate combination of parameters for different fishing areas and sea states can be selected in one operation.

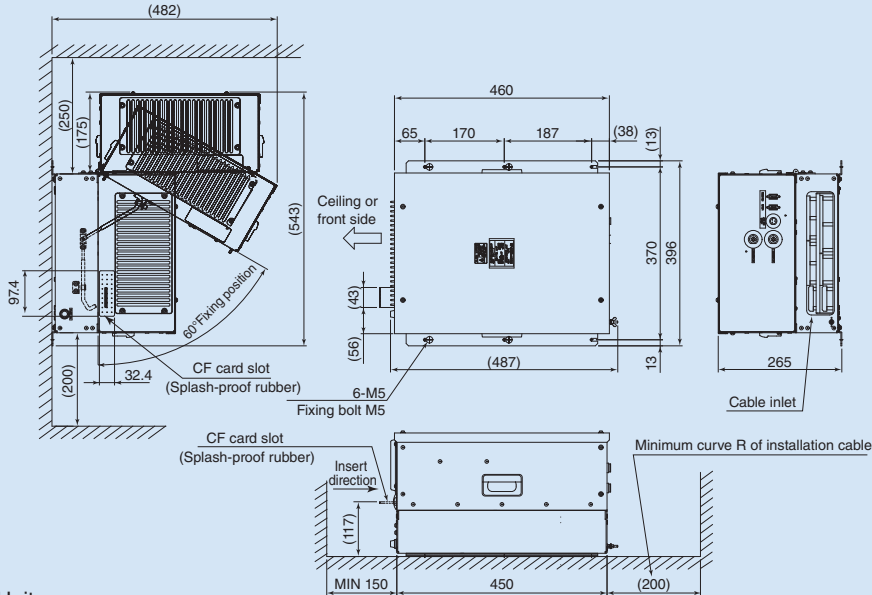
Lineup of Transducer Units

A choice of 24kHz and 28kHz frequencies are available for different fishing operations. The transducer units are available in two stroke lengths.

Flexible Installation and High Expandability

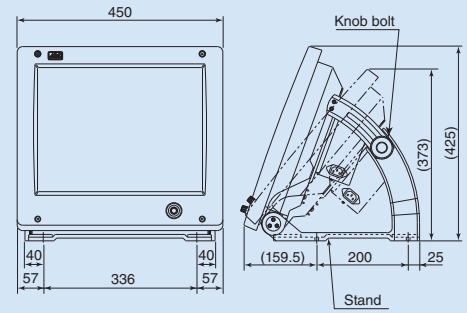
The display equipment is composed of Display Unit, Processor Unit and Keyboard Unit. The system is designed for flexible installation to meet the requirements for space and layout. Two or more display units can be installed, and remote operation from a crow's-nest (:fish watch position) is also available.

Processor Unit NJC-26 Approx. 15kg

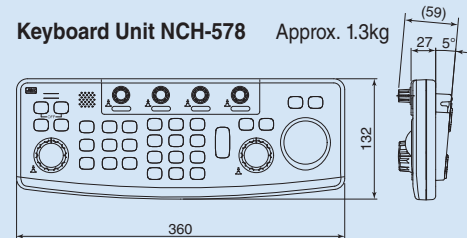


Unit : mm

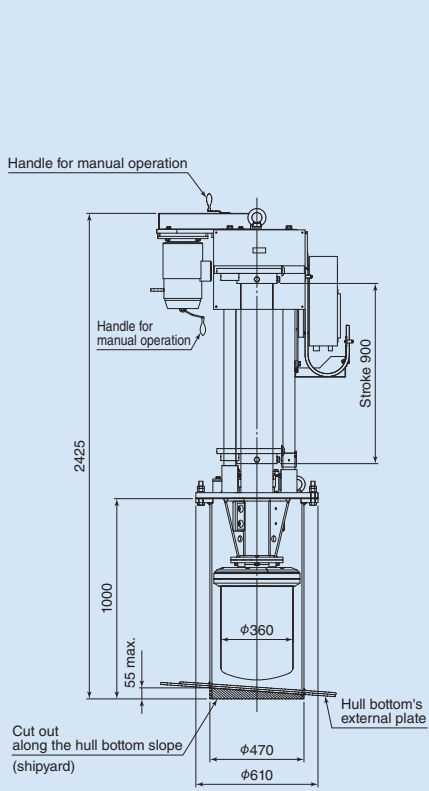
Display Unit NWZ-173-DT Approx. 13.5kg



Keyboard Unit NCH-578 Approx. 1.3kg



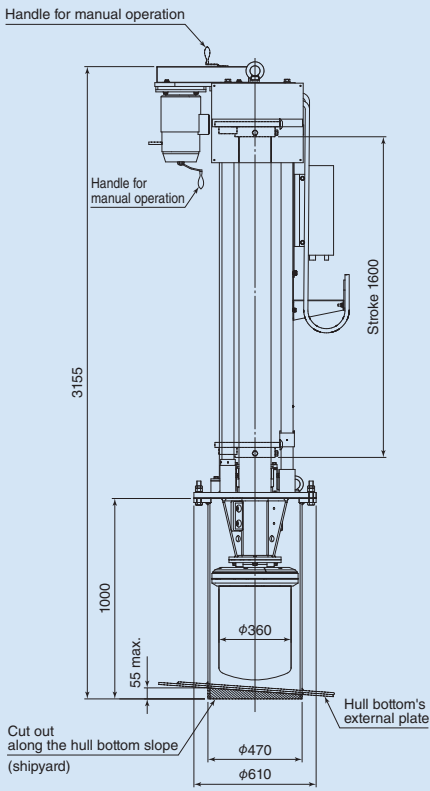
24kHz/28kHz Transducer Unit (short stroke model)



Unit : mm

Mass : 800kg

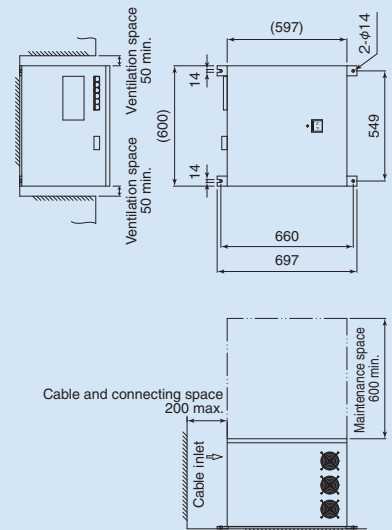
24kHz/28kHz Transducer Unit (long stroke model)



Unit : mm

Mass : 970kg

NTB-24 Transceiver Unit



Unit : mm

Mass : 120kg

For further information, contact:



Since 1915

Japan Radio Co., Ltd.

URL <http://www.jrc.co.jp/eng/>

Main Office: Fujisawa bldg. 30-16, Ogikubo 4-chome
Suginami-ku, Tokyo 167-8540, Japan
Telephone: +81-3-6832-1816
Facsimile: +81-3-6832-1845

Overseas Branches : Seattle, Amsterdam, Athens, Manila
Liaison Offices : Taipei, Jakarta, Singapore, Hanoi,
Shanghai, Hamburg, New York