

Key Features

- ▶ State-of-the-art EMS system for JRC portfolio
Supports: configuration, fault management, alarms, performance monitoring and security management
- ▶ Can be installed on-premise or in the cloud
- ▶ Open to 3rd party equipment (Development may be needed)

About EMS

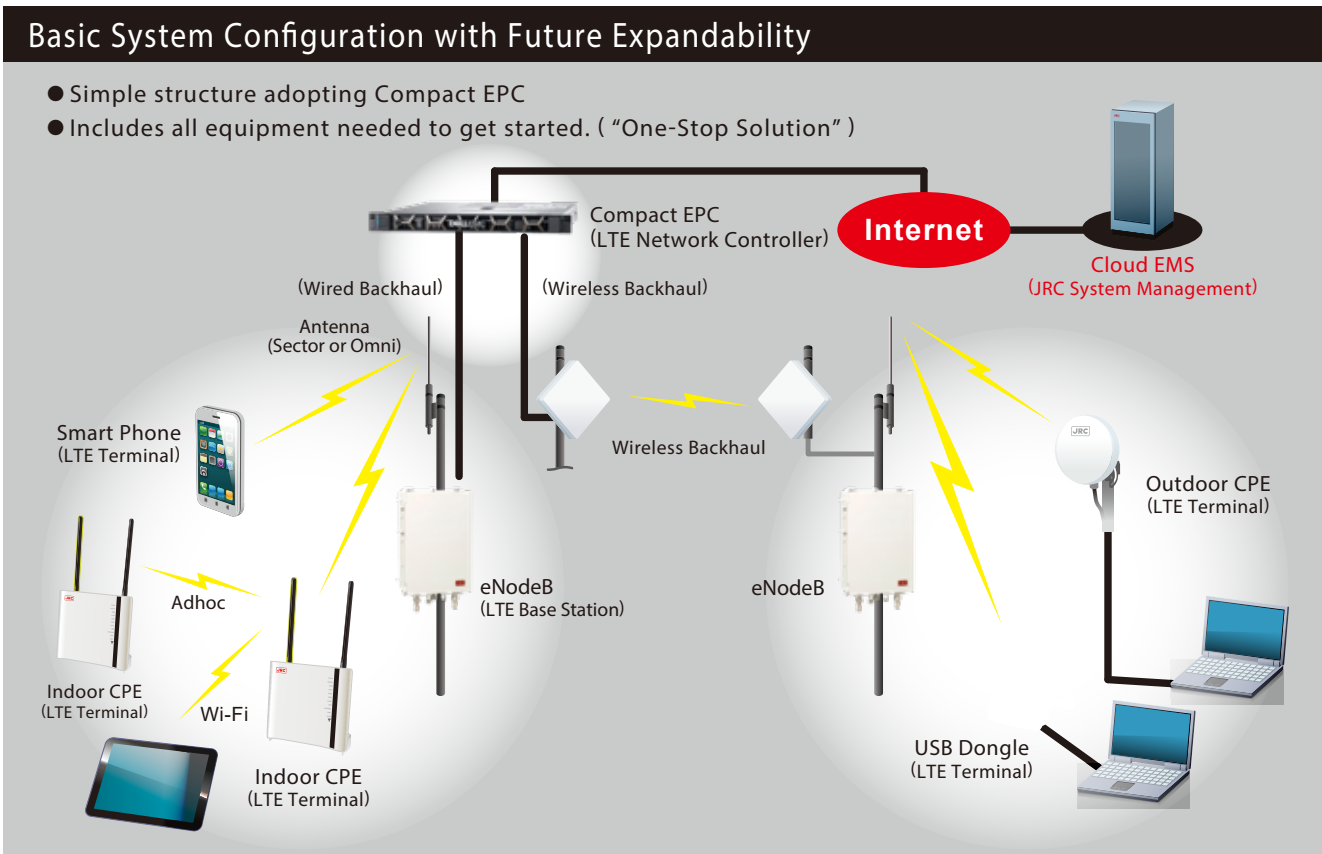
JRC EMS solution is a State-of-the-art Element Management System designed for JRC Private LTE portfolio. It enables operators to deploy, manage and maintain the network in a powerful way.

Functionalities

- Remote configuration
- Alarms on equipment fault, including email notifications
- Performance monitoring (LTE performance, KPI export...)
- Security management
- Web based GUI

JRC LTE System Diagram

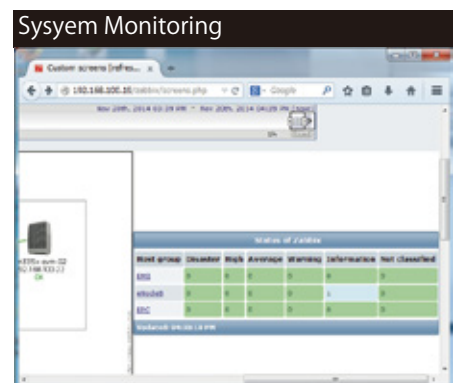
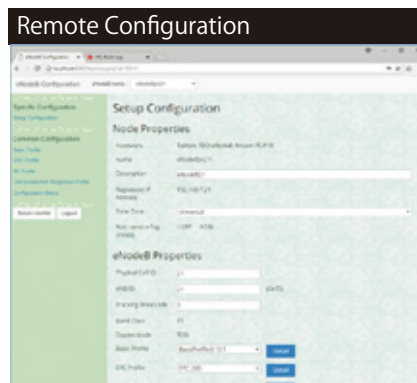
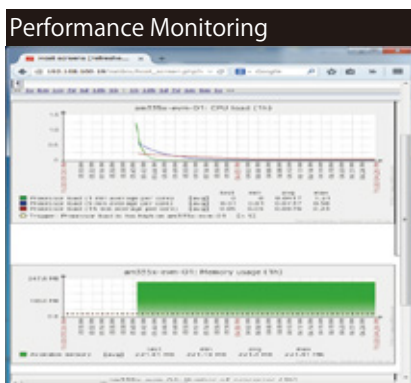
EMS enables total management of installation, configuration, operation, and maintenance for LTE network devices such as eNB (Evolved Node B), EPC, and other network elements



EMS Hardware Requirements

Name	Platform	CPU/Memory	Number of Hosts
Small	CentOS	Virtual Appliance	100
Medium	CentOS	2 CPU cores/2GB	500
Large	RedHat Enterprise Linux	4 CPU cores/8GB	>1000
Very Large	RedHat Enterprise Linux	8 CPU cores/16GB	>10000

Use Case



*Specifications are subject to change without notice.



Japan Radio Co., Ltd.

Japan Radio Co., Ltd.
1-12, Fukuoka 2-chome,
Fujimino-shi, Saitama
356-8580, Japan

Web / E-mail
www.jrclte.com
jrclteweb@jrclte.com