



Need a secure and robust communication tool?

JRC MCPTT is the most reliable Mission Critical Communication platform designed for public safety, defence, utility and mining.

Highlights

- 3GPP MCX Release 15 Compliant
- MCPTT, MCVideo and MCDData functions
- Group / Private - Audio / Video Communication
- Integrated Map Server. Emergency Alert on Map
- High Quality Audio / Video

■ Group Talk



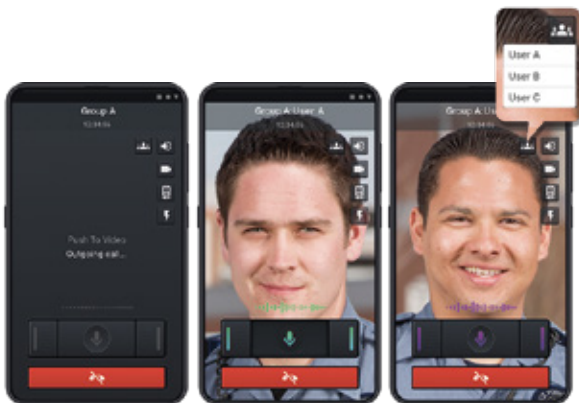
Push button to start PTT(Group)

To call another group, switch groups on the Groups screen.

Icon	Name	Notes
	Normal	PushToTalk is possible. By pressing,voice is transmitted to the group to which it belongs.
	Push	The state immediately after pressing the button. It communicates with the server and transitions to the transmission state when transmission becomes possible.
	Send	A state in which voice is being transmittsted to the group to which it belongs. By maintaining the pressed state, voice transmission is continuously performed. By relasing the button, the audio transmission ends.
	Receive	A state in which voice is being received. Voice is received by another member of the group to which it belongs. Voice cannot be transmitted in this state.
	NoConnection	Not connected to the server. Voice cannot be sent or received in this state.

■ Private Calls

Private call is a one-by-one call, which has two types, with Floor Control, and without Floor Control. With floor control: like PTT (half duplex) no floor control: like telephone (full duplex) When the KMS service is active, the private call is encrypted.

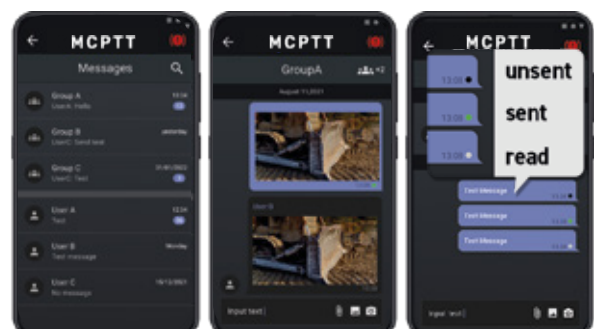


■ Private/Group Messages

Chat communication, private and groups, using MCData-type.

■ Push to Video

Push to Video is a video call with a Floor Control that allows 1to1 or group calls.





Private Video

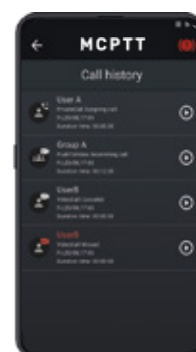
Private call is a one-by-one call with video streams.

Icon	Name	Notes
	Mic	Switch microphone On/Off.
	Audio	Switch audio On/Off.
	Camera	Switch camera On/Off.
	Camera Rear/Front	Switch camera Rear/Front.
	Light	Turn the light On/Off.

Call History

In Call History, the call type and duration time are displayed.

Icon	Name	Notes
	Audio Incoming	Private Call (NFC/FC) Received
	Audio Outgoing	Private Call (NFC/FC) Sent
	Vedio Incoming	Video Call/Push to Video Received
	Camera Rear/Front	Video Call/Push to Video Sent



Alarm

When the Emergency button is pressed, an Emergency notification is sent to other terminals.

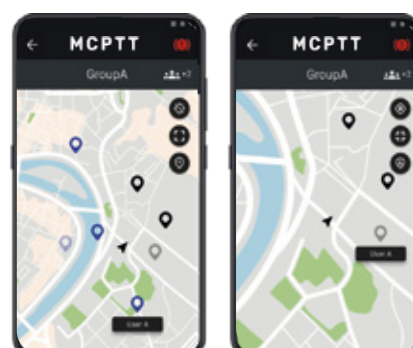
MAP

Depending on the option, the map shows the Open Street Map (public server or local server).

The user icon is grayed out after a certain period of time has passed since it went offline.

Furthermore, the icon is hidden after a certain period of time.

The users to be displayed can be selected from the group to which they belong or all users.



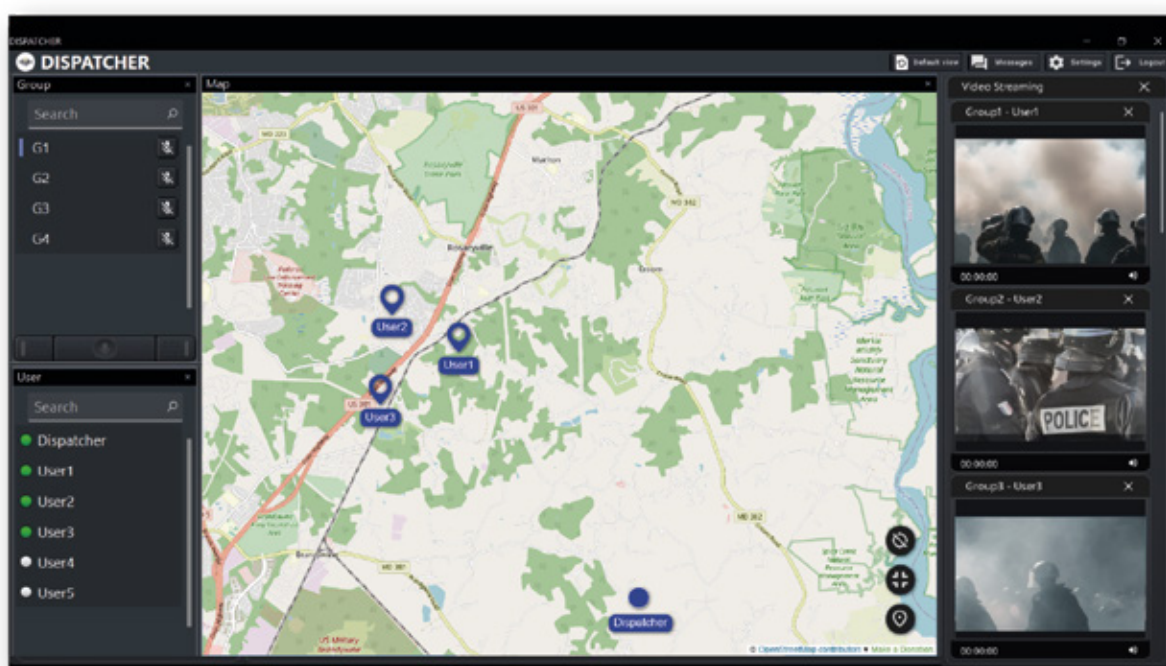


■ Color Setting

The application color can be selected from light and dark.

Color settings can be selected by the user or changed according to the terminal settings.

■ Dispatcher



The system has a modern IP based Mission Critical Application including Push-To-Talk (PTT), video and data (MCX) solution which uses capability of the latest ruggedized smartphones . It grants users maximum operational capability with sophisticated user interface and keeps high availability even on LTE network. It provides “always on” PTT operation, group messaging, voice basis group communication, video basis group communication, GPS basis users location management and can receive and display video from multiple terminals in real time

Highlights

- End To End Quality Control for Audio and Video Stream
- Adaptive bitrate control for video stream
- Acoustic Echo Canceller and Noise Suppressor
- Session control optimization for public safety user



Japan Radio Co., Ltd.

Japan Radio Co., Ltd.
1-12, Fukuoka 2-chome,
Fujimino-shi, Saitama
356-8580, Japan

Web / E-mail
www.jrclte.com
contact@jrclte.com